



# 1 About GUC

1.1 Company Overview

1.2 GUC's Sustainability Commitment

1.3 ESG Key Performance

## 1.1 Company Overview

Global Unichip Corporation (GUC) (referred to as: GUC, the Company, we in this report) was founded on January 22, 1998. The operational headquarters is located in Hsinchu Science Park, Taiwan, with a global workforce of 907 employees (2024). Listed on the stock exchange in 2006 with stock code 3443. In 2024, the capital was NT\$1.34 billion, with earnings per share of NT\$25.75. Taiwan Semiconductor Manufacturing Company (referred to as: TSMC in this report), which holds 34.84% of GUC's shares, is the Company's largest shareholder. TSMC is GUC's sole wafer foundry and the most important partner for advanced manufacturing processes and packaging technologies. Through close collaboration with TSMC, GUC efficiently overcomes challenges at every stage, from design to manufacturing.

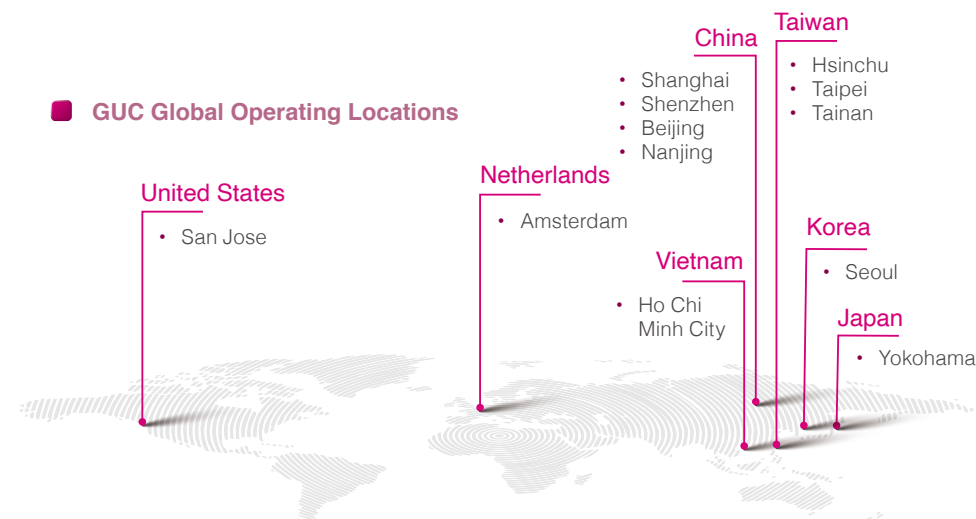
GUC has a total of 12 global operational sites worldwide. The Company profile and operational sites are detailed on the table below.

### GUC Company Overview

#### Global Unichip Corporation (GUC)

Stock Code	3443
Establishment Date	January 22, 1998
Headquarters Location	No. 10, Li Hsin 6th Road, Hsinchu Science Park, Hsinchu City 300096, Taiwan
Global Workforce	A workforce of 907 employees
Paid-in Capital	NTD 1,340,119,110
Main Business Operations	Providing comprehensive advanced IC customization services
2024 Consolidated Net Revenue	NTD 25,044 million
2024 Earnings Per Share	NTD 25.75

### GUC Global Operating Locations



Hsinchu Headquarters	No. 10, Li Hsin 6th Road, Hsinchu Science Park, Hsinchu City 300096, Taiwan
Taipei	8F, No. 246, Section 1, Neihsu Road, Neihsu District, Taipei City, Taiwan
Tainan	No. 189, Section 1, Yongfu Road, West Central District, Tainan City (Room A1, 6F, Cathay Landmark Tainan)
USA/San Jose	Junction Ave. Suite 201 San Jose, CA 95134, USA
Netherlands/Amsterdam	World Trade Center Tower H - 6th Floor, Zuidplein 58, 1077 XV Amsterdam, The Netherlands
Japan/Yokohama	横浜西区みなとみらい 2-2-1 横浜ランドマークタワー 16 階
Korea/Seoul	서울특별시 강남구 테헤란로 208 안제타워 3F
Vietnam/Ho Chi Minh City	The Grace Tower 7th Floor, 71 Hoang Van Thai Street, Tan Phu Ward, District 7, Ho Chi Minh City 700000 Vietnam
China/Shanghai	Room 2305, No.1350 North Sichuan Road, Hongkou District, Shanghai 200080
Shenzhen	749, 7/F, Tower A, SCC, No.88 First Haide Avenue, Nanshan District, Shenzhen 518000, China
Beijing	Room B12, 8F, North Tower, CP Centre, CBD Core Area Z14, Guanghua Road, Chaoyang Dist., Beijing
Nanjing	14th Floor, Block C, Fuying Building, No. 99, Tuanjie Road, Research & Innovation Park, Nanjing Jiangbei New Area

## GUC Business Overview

As an advanced ASIC provider, GUC actively seizes opportunities within these challenges in the face of rapid technological changes, increased complexity in the high-end process application chip design, and shifts in the supply chain landscape. We offer comprehensive ASIC design services, aiming to become the world's leading provider of customized IC solutions. Our services include Spec-in and SoC Integration, Physical Design, Advanced Packaging Technology, Production Services, and cutting-edge HBM and die-to-die interconnect IP.

### ■ Main Business:

1. Research, development, production, testing, manufacturing and sales of:
  - Various application-specific integrated circuits with embedded memory, logic, and analog components.
  - Component libraries for application-specific integrated circuit designs.
  - Automation tools for application-specific integrated circuit designs.
  - Customization, design, technical support, and licensing of Silicon Intellectual Property components.
2. Technical services related to the aforementioned products and as commissioned by customers.

### ■ Business Proportion of Each Product (Unit: NTD Thousand)

Main Products	2022		2023		2024	
	Sales Value	Proportion	Sales Value	Proportion	Sales Value	Proportion
Wafer Products	16,880,240	70.22%	18,980,971	72.34%	16,160,984	64.53%
Non-Recurring Engineering (NRE)	6,312,933	26.26%	6,763,015	25.77%	8,435,858	33.68%
Others	846,498	3.52%	496,728	1.89%	447,303	1.79%
Total	24,039,671	100.00%	26,240,714	100.00%	25,044,145	100%



## ■ Main Products and Services

1. **ASIC and Wafer Products:** Providing customers with comprehensive services from design to wafer manufacturing, packaging, and testing.
2. **Non-Recurring Engineering (NRE):** Providing circuit design component databases and various silicon intellectual properties required for product design, as well as circuit diagrams for manufacturing product mask sets. Commissioning foundries to produce masks, wafers, dicing, and packaging, followed by product testing by our engineering staff, and then delivering product samples to customers for trial production.
3. **Multiple-Project Wafer (MPW):** Offering cost-effective and timely chip verification services by integrating designs from different customers, sharing the manufacturing costs of the same set of masks and wafers (Engineer Run). This approach enables design engineers to achieve low-cost, rapid trial production verification using advanced process technology before mass production.
4. **Intellectual Property (IP):** Delivering integrated circuit designs that have been designed, verified, and can be reused with specific functions. With the advancements of integrated circuit manufacturing technology, multi-functional chips and even SoC have become the mainstream of IC design. GUC provides reusable IPs that help reduce customers' time spent on repetitive designs and minimize investment in design resources.

## ■ Planned Development of New Products and Services

In addition to the continuous development of advanced process silicon intellectual property for 7nm, 6nm, 5nm, 3nm, and 2nm processes—including ultra-high-speed interface chip interconnect IP "GLink"/UCIe, HBM2/2E/3/4 Controller and PHY components, as well as advanced ADC/DAC—the Company is also upgrading its existing application components, such as Power Management Solution and Clock Generator, to more advanced processes. The Company has developed internationally open autonomous design standard IPs (TCAM, SRAM), customized Standard cells, as well as a rich portfolio of proprietary IPs and Library databases, offering customers with more comprehensive solutions.

## ■ Development Trends and Competitive Landscape of Products

In recent years, the mobile phone market has had the largest growth and total volume. To differentiate their phones, more mobile phone manufacturers have been investing in the independent research, development, and production of application processor (AP) chips. As a result, the market for IC design service providers is becoming more limited. At the current stage, the innovation and development of data centers, the Internet of Things, automotive electronics, drones, and robots over the past few years have gradually shaped related technologies and business models, which are now the primary businesses for the IC design service industry. Emerging markets such as AI and Machine Learning, 5G Networking, advanced driver assistance systems (ADAS), and virtual reality (AR/VR) have sparked enthusiastic discussion and shown preliminary results in product development. While these applications are still evolving, they are expected to be the mainstream of the future technology industry and the source of business opportunities. GUC leads the industry in advanced process technologies of 7/6/5/3 nanometers, achieving exceptional results. By leveraging our experience in mass production, we can meet customer demands for high performance, low power consumption, and advanced packaging in the production process, securing our position as a leader in the highly competitive IC design service sector.

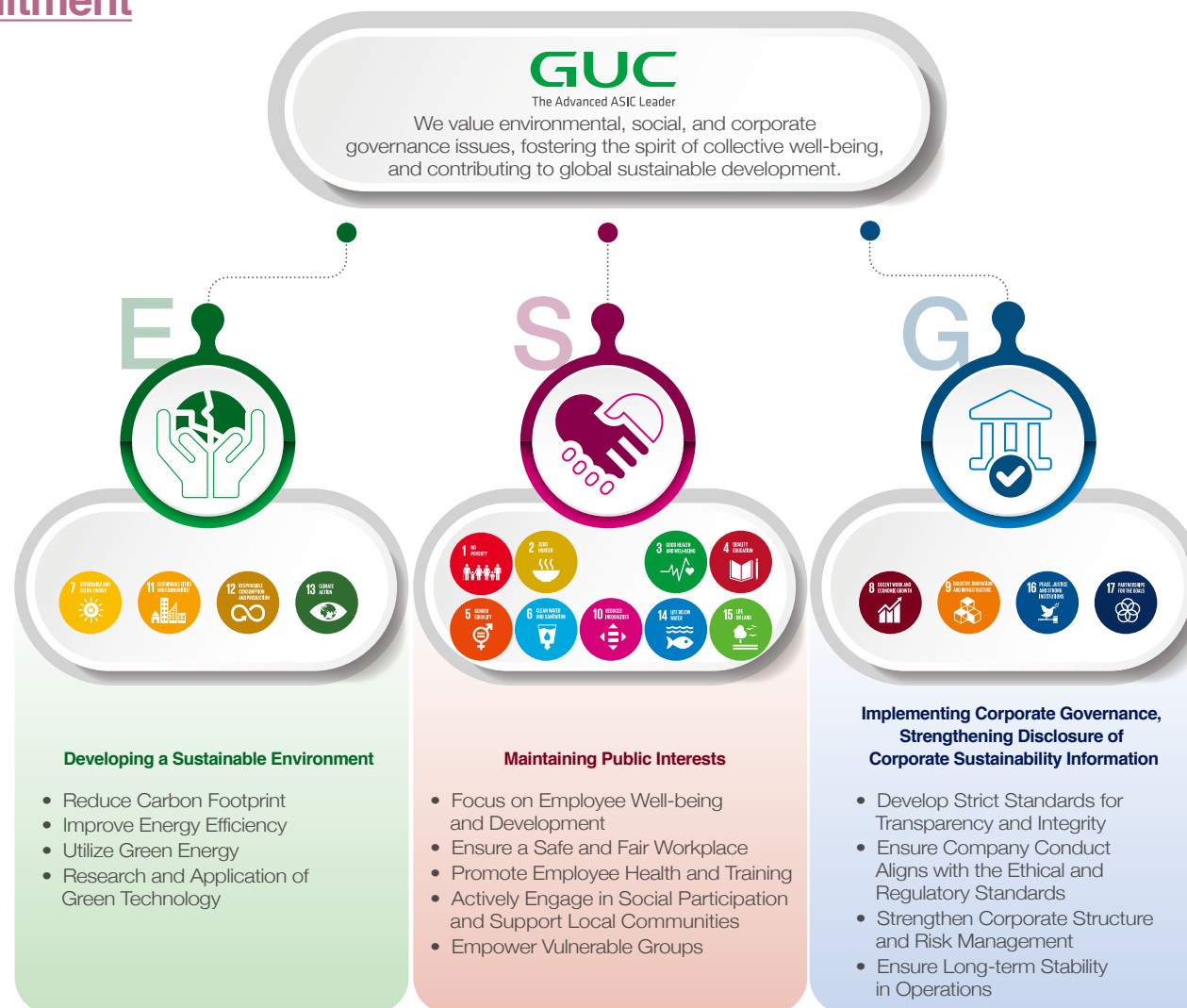


## 1.2 GUC's Sustainability Commitment

GUC is committed to advancing environmental, social, and corporate governance (ESG) efforts to achieve sustainable development and shared prosperity. We aim to foster collective well-being while contributing to global sustainability.

- In terms of the environment, we are dedicated to reducing our carbon footprint, improving energy efficiency, and utilizing green energy. We will focus on the research, development, and application of green technologies to create a sustainable ecosystem and preserve the planet's natural resources.
- As for society, we prioritize the well-being and development of our employees and view social participation as a core part of our corporate responsibility. By providing a safe and fair workplace, supporting local communities, promoting education, and assisting rural areas and disadvantaged groups, we are devoted to building a more inclusive and prosperous society.
- Regarding corporate governance, we have established stringent standards for transparency and integrity to ensure that the company conduct aligns with the highest ethical and regulatory standards. Additionally, we relentlessly strengthen the Company's internal structure and risk management to ensure long-term stability in operations.

We have established "GUC ESG Best Practice Principles" and formed a ESG Committee made up of crossdepartmental personnel. The ESG Committee is responsible for regularly reporting on the promotion and effectiveness of corporate sustainability to the Board of Directors. The sustainability report is published on the company website after being verified by a third party and approved by the Board.



## GUC's Sustainability Policy

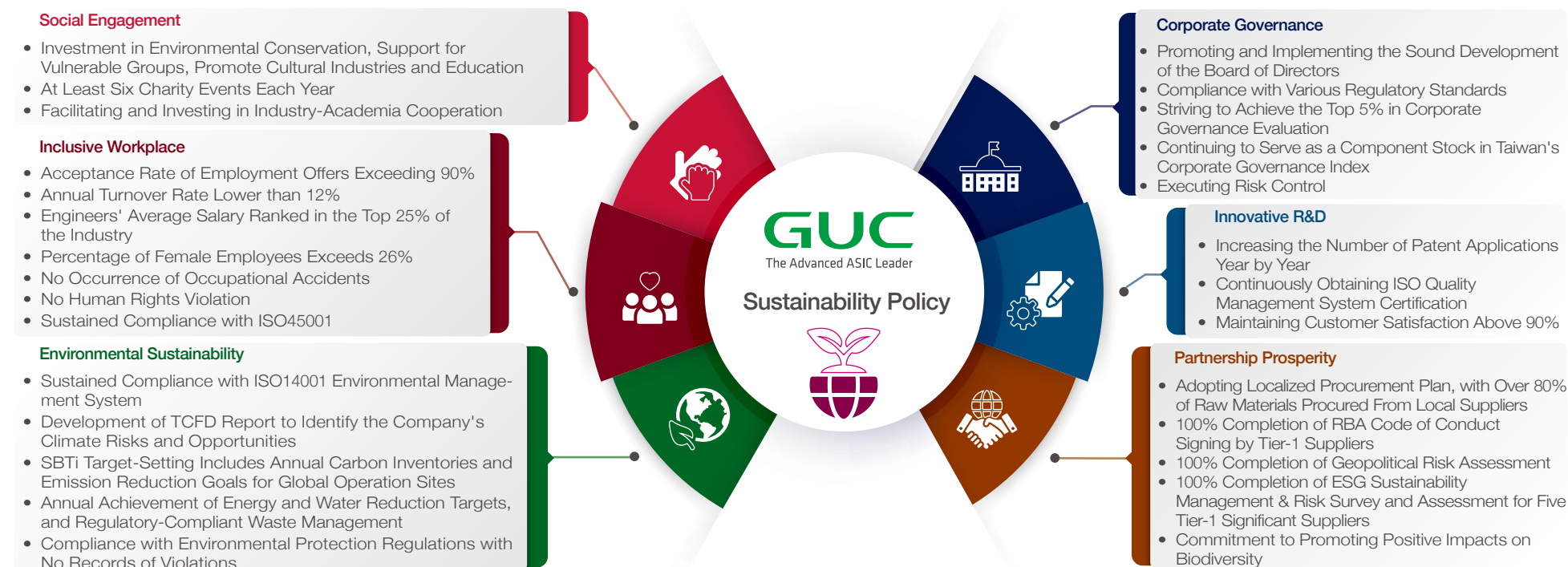
In addition to striving for excellence in its core IC design services, GUC emphasizes building effective interactions and fair treatment with stakeholders including customers, shareholders, government agencies, society, suppliers, and employees, actively implementing corporate social responsibility to promote sustainable operations.

We have established six strategic aspects of sustainable operation to achieve the corporate sustainable development goals:

- Corporate Governance
- Innovative R&D
- Partnership Prosperity
- Environmental Sustainability
- Inclusive Workplace
- Social Engagement

Our Implementation Guidelines:

- In terms of corporate governance, GUC upholds integrity management and ethical conduct, ensuring a balance of interests among all stakeholders to foster a positive cycle within the industry, collectively contribute to social advancement.
- In the areas of innovation and research development, partner co-prosperity, and environmental sustainability, GUC embraces green design and green supply chain, prioritizing resource efficiency, adopting environmentally friendly practices, and maintaining biodiversity.
- Regarding friendly workplace and social engagement, GUC upholds people-centered principles and is dedicated to creating a diverse, inclusive, and high-quality work environment. Through company resources and employee participation in voluntary services, we contribute to environmental conservation, support rural areas, and assist disadvantaged groups with financial, material, and human resources, all aimed at building a mutually beneficial society.



## Sustainability Governance Structure

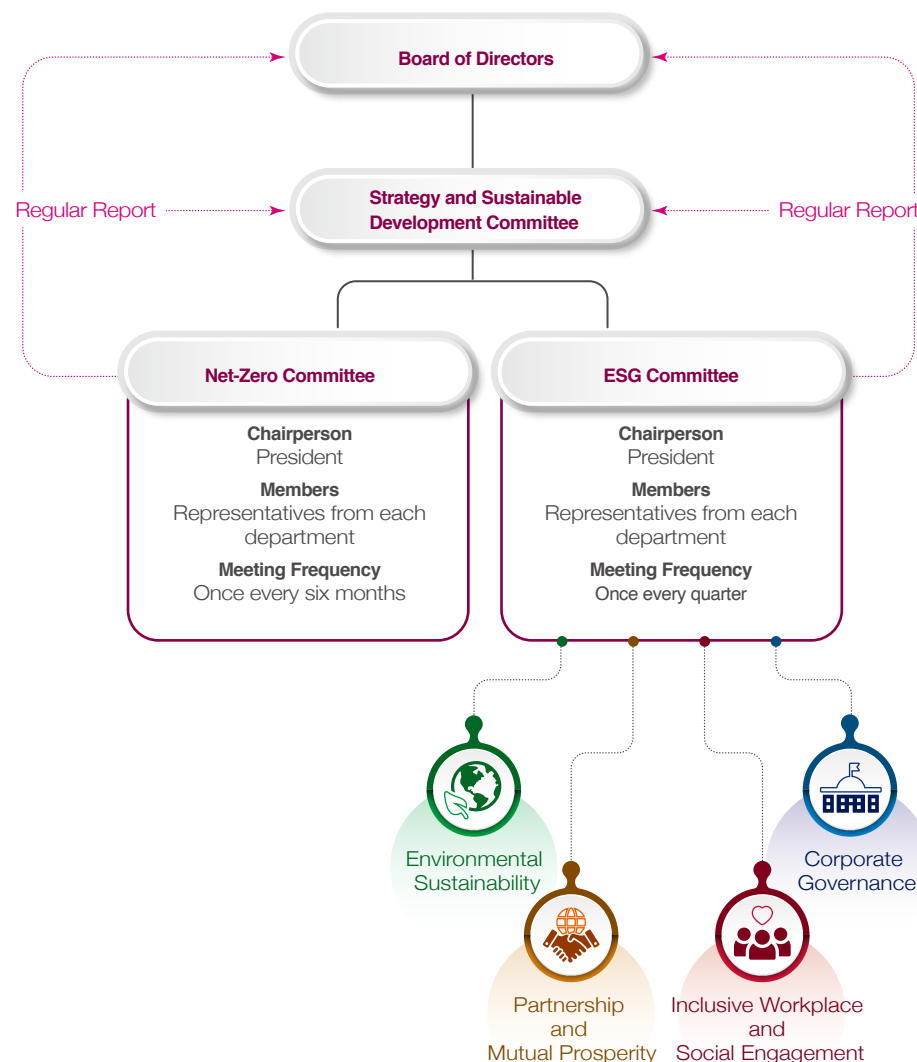
Since its establishment, GUC has consistently pursued excellence in its core business. Our management team has dedicated itself to developing a management system to ensure that both the Company and its suppliers adhere to these standards and continuously improve. In addition, we foster effective communication and fair treatment with stakeholders including shareholders, employees, customers, suppliers, industry-government-academia-research institutions, and society. We actively fulfill our corporate social responsibility to realize sustainable operations.

GUC's corporate sustainability is overseen by the Strategy and Sustainable Development Committee, with an ESG Committee also in place. President Sean Tai serves as the Chairperson of the ESG Committee, with representatives appointed from each department who participate as committee members in various functional groups. The ESG Committee follows the resolutions set by the Strategy and Sustainable Development Committee, staying focused on global sustainability trends. It leads cross-functional teams in developing sustainability initiatives that comply with international standards and regulations. By understanding stakeholder needs, the committee identifies material issues and risks in environment, society, and corporate governance. It adapts to and mitigates potential impacts on operations from challenges such as climate change, while also formulating and executing strategies. The Board of Directors reviews and provides guidance with the Company's ESG development direction.

The ESG Committee holds regular meetings to track implementation progress and evaluate outcomes. It reports periodically to the Board of Directors on key sustainability topics, risk assessments and response strategies, implementation status, and performance, thereby ensuring effective sustainability management. The Company also publishes a Sustainability Report to disclose its sustainability performance on the official website, accompanied by a verification statement issued by BSI Taiwan.

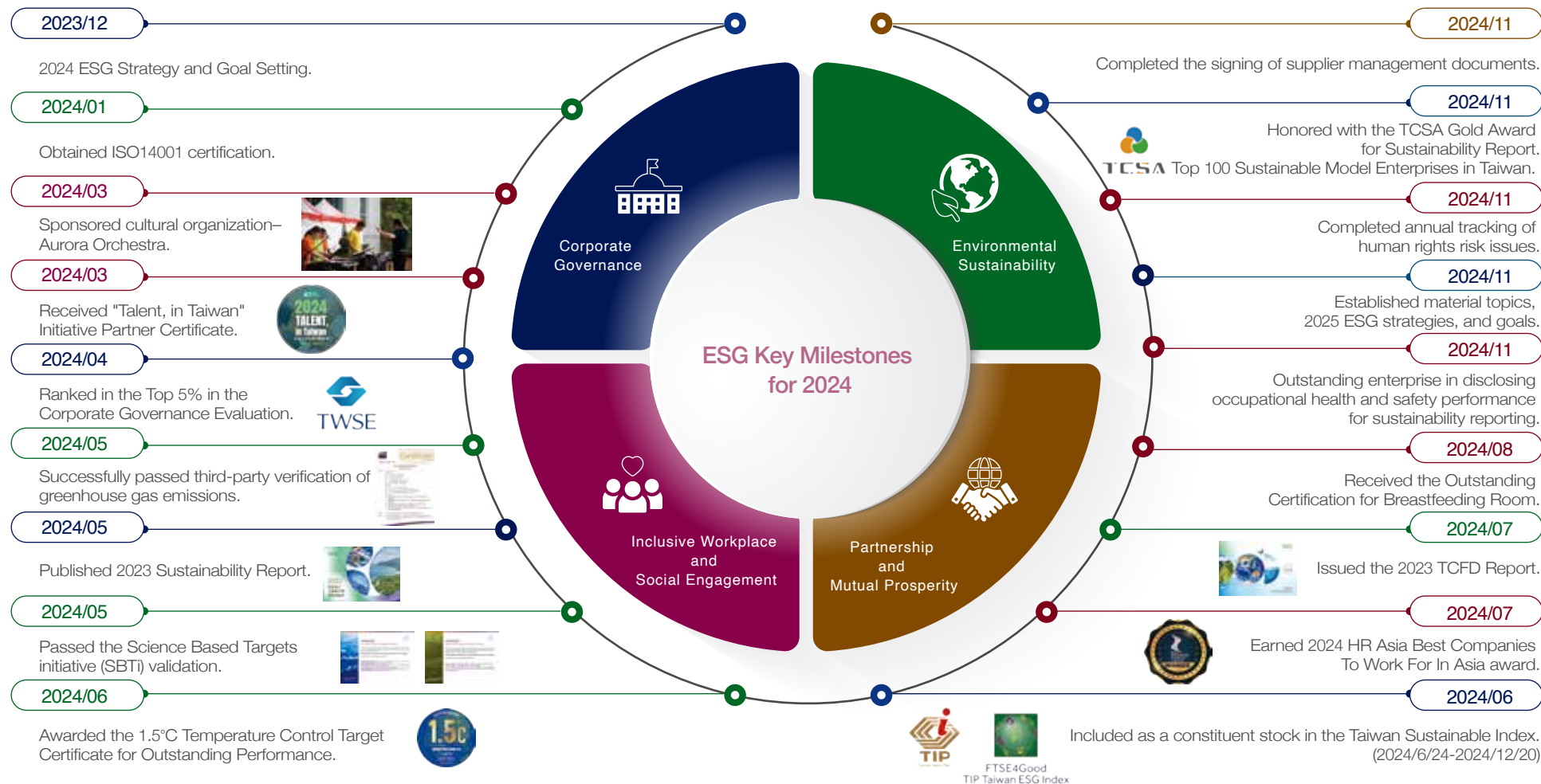
Regular Annual Reports to the Board of Directors:

1. Identification of material topics and risks of concern, along with the formulation of strategies and response plans.
2. Reporting of ESG achievements and setting of goals for the following year.
3. Semi-annual updates on ESG progress and the effectiveness of implementation.





## Annual achievements reported by the ESG Committee to the Board of Directors



Note 1: In 2024, the ESG Committee reported to the Board of Directors on sustainability development on January 31, May 16, July 25, and November 28, respectively.  
Note 2: Blue ●/Corporate Governance, Yellow ●/Partner Prosperity, Green ●/Environmental Sustainability, Red ●/Inclusive Workplace and Social Engagement.



## ■ ESG Highlights of the Year



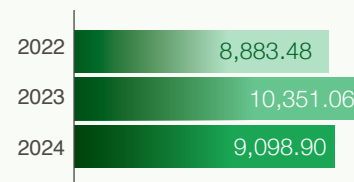
## 1.3 ESG Key Performance



### Environmental Aspect

■ **Installation of Solar Energy, Estimated to Contribute Approximately 14,000 Kilowatt-Hours Annually.**

■ **Greenhouse Gas Emissions**  
(tonnes/CO<sub>2</sub> equivalent)



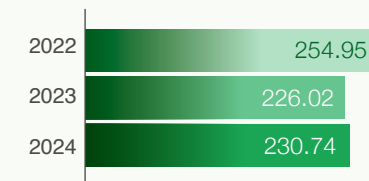
Note: The data is the total of Scope 1 and Scope 2.

■ **Annual Water Usage Intensity**  
(the information boundary is Hsinchu Headquarters)



Note: Water usage intensity = Annual water resource usage (cubic meters) / Number of employees

■ **Energy Intensity**  
(the information boundary is Hsinchu Headquarters)



Note: Energy intensity = Annual electricity usage / Annual revenue (NTD million)

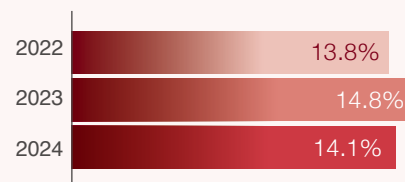


## Social Aspect

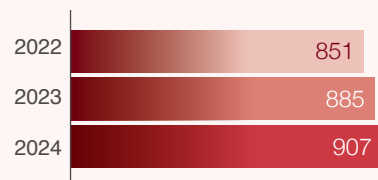
### Percentage of Female Employees (%) (global workforce)



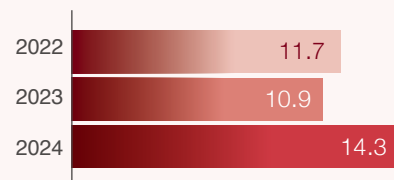
### Percentage of Female Managers (%) (global workforce)



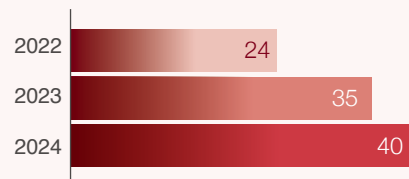
### Total Number of Global Employees (person)



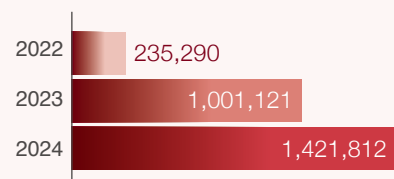
### Average Learning Hours of Global Employees (hour)



### Number of Volunteers (person)



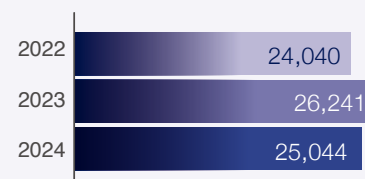
### Charitable Donations (New Taiwan Dollar: NTD)



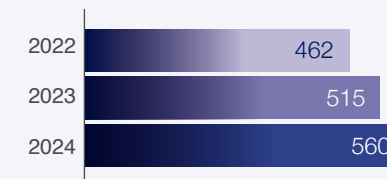
## Governance Aspect

### Board of Directors Consists of Eight Seats, Including Four Independent Directors and One Female Director.

### Revenue (NTD: Million)



### Cumulative Number of Patents Obtained and Maintained (Cases)



### R&D Expenditure (NTD: Million)



### Number of Cases Involving Corruption, Anti-competitive, and Other Ethical Litigation (Cases)

2022	2023	2024
0	0	0

### Market Value (NTD: Million)

